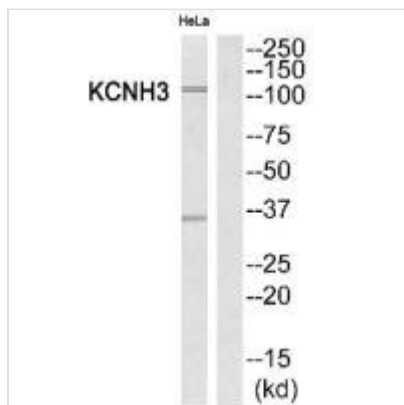




KCNH3 Antibody

Product Code	CSB-PA440643
Storage	Upon receipt, store at -20°C or -80°C. Avoid repeated freeze.
Uniprot No.	Q9ULD8
Immunogen	Synthesized peptide derived from Internal of Human KCNH3.
Raised In	Rabbit
Species Reactivity	Human,Mouse,Rat
Specificity	The antibody detects endogenous levels of total KCNH3 protein.
Tested Applications	ELISA,WB;WB:1:500-1:3000
Form	Rabbit IgG in phosphate buffered saline (without Mg ²⁺ and Ca ²⁺), pH 7.4, 150mM NaCl, 0.02% sodium azide and 50% glycerol.
Purification Method	The antibody was affinity-purified from rabbit antiserum by affinity-chromatography using epitope-specific immunogen.
Clonality	Polyclonal
Alias	BEC1; Brain-specific eag-like channel 1; ELK channel 2; ELK2; ether-a-go-go K(+) channel family member
Product Type	Polyclonal Antibody
Immunogen Species	Homo sapiens (Human)
Target Names	KCNH3

Image



Western blot analysis of extracts from HeLa cells, using KCNH3 antibody.

Usage For Research Use Only. Not for use in diagnostic or therapeutic procedures.