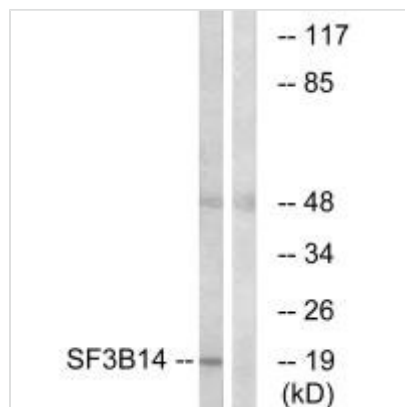




SF3B6 Antibody

Product Code	CSB-PA201433
Storage	Upon receipt, store at -20°C or -80°C. Avoid repeated freeze.
Uniprot No.	Q9Y3B4
Immunogen	Synthesized peptide derived from C-terminal of Human SF3B14.
Raised In	Rabbit
Species Reactivity	Human,Mouse
Specificity	The antibody detects endogenous levels of total SF3B14 protein.
Tested Applications	ELISA,WB;WB:1:500-1:3000
Form	Rabbit IgG in phosphate buffered saline (without Mg ²⁺ and Ca ²⁺), pH 7.4, 150mM NaCl, 0.02% sodium azide and 50% glycerol.
Purification Method	The antibody was affinity-purified from rabbit antiserum by affinity-chromatography using epitope-specific immunogen.
Clonality	Polyclonal
Alias	CGI-110; HSPC175; Ht006; PM14; pre-mRNA branch site protein p14
Product Type	Polyclonal Antibody
Immunogen Species	Homo sapiens (Human)
Target Names	SF3B6

Image



Western blot analysis of extracts from HepG2 cells, using SF3B14 antibody.