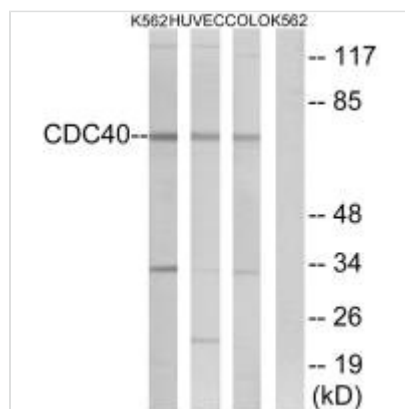




CDC40 Antibody

Product Code	CSB-PA229473
Storage	Upon receipt, store at -20°C or -80°C. Avoid repeated freeze.
Uniprot No.	O60508
Immunogen	Synthesized peptide derived from internal of Human CDC40.
Raised In	Rabbit
Species Reactivity	Human,Mouse,Rat
Specificity	The antibody detects endogenous levels of total CDC40 protein.
Tested Applications	ELISA,WB;WB:1:500-1:3000
Form	Rabbit IgG in phosphate buffered saline (without Mg ²⁺ and Ca ²⁺), pH 7.4, 150mM NaCl, 0.02% sodium azide and 50% glycerol.
Purification Method	The antibody was affinity-purified from rabbit antiserum by affinity-chromatography using epitope-specific immunogen.
Clonality	Polyclonal
Alias	cell division cycle 40; EH-binding protein 3; EHB3; pre-mRNA splicing factor 17; pre-mRNA-processing factor 17
Product Type	Polyclonal Antibody
Immunogen Species	Homo sapiens (Human)
Target Names	CDC40

Image



Western blot analysis of extracts from K562 cells, HUVEC cells and COLO cells, using CDC40 antibody.