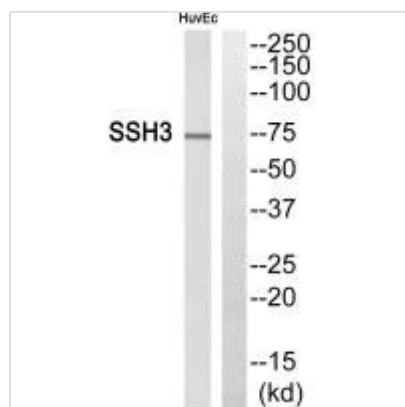




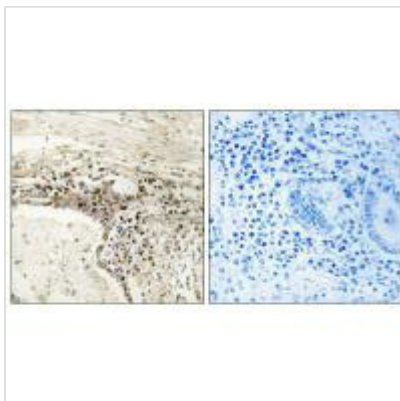
SSH3 Antibody

Product Code	CSB-PA593063
Storage	Upon receipt, store at -20°C or -80°C. Avoid repeated freeze.
Uniprot No.	Q8TE77
Immunogen	Synthesized peptide derived from internal of Human SSH3.
Raised In	Rabbit
Species Reactivity	Human
Specificity	The antibody detects endogenous levels of total SSH3 protein.
Tested Applications	ELISA, WB, IHC; WB: 1:500-1:3000, IHC: 1:50-1:100
Form	Rabbit IgG in phosphate buffered saline (without Mg ²⁺ and Ca ²⁺), pH 7.4, 150mM NaCl, 0.02% sodium azide and 50% glycerol.
Purification Method	The antibody was affinity-purified from rabbit antiserum by affinity-chromatography using epitope-specific immunogen.
Clonality	Polyclonal
Alias	Protein phosphatase Slingshot homolog 3; SSH-3L; hSSH-3L;
Product Type	Polyclonal Antibody
Immunogen Species	Homo sapiens (Human)
Target Names	SSH3

Image



Western blot analysis of extracts from HuvEc cells, using SSH3 antibody.



Immunohistochemistry analysis of paraffin-embedded human lung carcinoma tissue using SSH3 antibody.