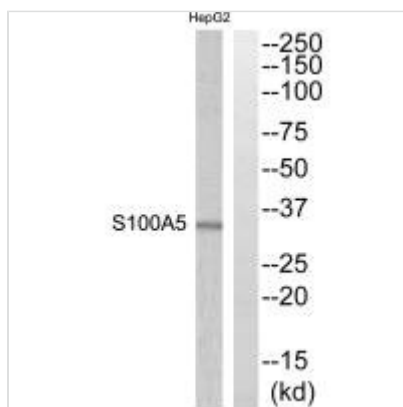




S100A5 Antibody

Product Code	CSB-PA187722
Storage	Upon receipt, store at -20°C or -80°C. Avoid repeated freeze.
Uniprot No.	P33763
Immunogen	Synthesized peptide derived from internal of Human S100A5.
Raised In	Rabbit
Species Reactivity	Human,Mouse,Rat
Specificity	The antibody detects endogenous levels of total S100A5 protein.
Tested Applications	ELISA,WB;WB:1:500-1:3000
Form	Rabbit IgG in phosphate buffered saline (without Mg ²⁺ and Ca ²⁺), pH 7.4, 150mM NaCl, 0.02% sodium azide and 50% glycerol.
Purification Method	The antibody was affinity-purified from rabbit antiserum by affinity-chromatography using epitope-specific immunogen.
Clonality	Polyclonal
Alias	Protein S-100D; Protein S100-A5; S100 calcium binding protein A5; S100 calcium-binding protein A5; S100A5
Product Type	Polyclonal Antibody
Immunogen Species	Homo sapiens (Human)
Target Names	S100A5

Image



Western blot analysis of extracts from HepG2 cells, using S100A5 antibody.

Usage

For Research Use Only. Not for use in diagnostic or therapeutic procedures.