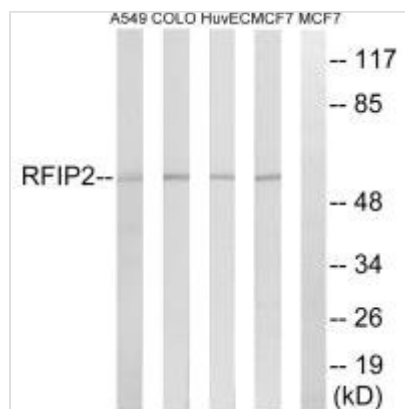




RAB11FIP2 Antibody

Product Code	CSB-PA437749
Storage	Upon receipt, store at -20°C or -80°C. Avoid repeated freeze.
Uniprot No.	Q7L804
Immunogen	Synthesized peptide derived from internal of Human RAB11FIP2.
Raised In	Rabbit
Species Reactivity	Human, Mouse
Specificity	The antibody detects endogenous levels of total RAB11FIP2 protein.
Tested Applications	ELISA, WB; WB: 1:500-1:3000
Form	Rabbit IgG in phosphate buffered saline (without Mg ²⁺ and Ca ²⁺), pH 7.4, 150mM NaCl, 0.02% sodium azide and 50% glycerol.
Purification Method	The antibody was affinity-purified from rabbit antiserum by affinity-chromatography using epitope-specific immunogen.
Clonality	Polyclonal
Alias	KIAA0941; NRip11; Rab11 family-interacting protein 2; Rab11-FIP2; RFIP2
Product Type	Polyclonal Antibody
Immunogen Species	Homo sapiens (Human)
Target Names	RAB11FIP2

Image



Western blot analysis of extracts from A549 cells, COLO cells, HUVEC cells and MCF-7 cells, using RAB11FIP2 antibody.

Usage

For Research Use Only. Not for use in diagnostic or therapeutic procedures.