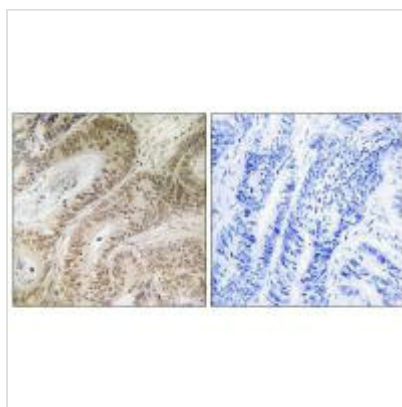




RDM1 Antibody

Product Code	CSB-PA779905
Storage	Upon receipt, store at -20°C or -80°C. Avoid repeated freeze.
Uniprot No.	Q8NG50
Immunogen	Synthesized peptide derived from internal of Human RDM1.
Raised In	Rabbit
Species Reactivity	Human
Specificity	The antibody detects endogenous levels of total RDM1 protein.
Tested Applications	ELISA,IHC;IHC:1:50-1:100
Form	Rabbit IgG in phosphate buffered saline (without Mg ²⁺ and Ca ²⁺), pH 7.4, 150mM NaCl, 0.02% sodium azide and 50% glycerol.
Purification Method	The antibody was affinity-purified from rabbit antiserum by affinity-chromatography using epitope-specific immunogen.
Clonality	Polyclonal
Alias	RAD52 homolog B; RAD52 motif-containing protein 1; RAD52B;
Product Type	Polyclonal Antibody
Immunogen Species	Homo sapiens (Human)
Target Names	RDM1

Image



Immunohistochemistry analysis of paraffin-embedded human colon carcinoma tissue using RDM1 antibody.

Usage For Research Use Only. Not for use in diagnostic or therapeutic procedures.