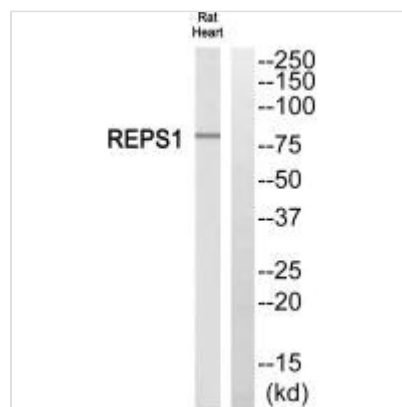




REPS1 Antibody

Product Code	CSB-PA444817
Storage	Upon receipt, store at -20°C or -80°C. Avoid repeated freeze.
Uniprot No.	Q96D71
Immunogen	Synthesized peptide derived from C-terminal of Human REPS1.
Raised In	Rabbit
Species Reactivity	Human
Specificity	The antibody detects endogenous levels of total REPS1 protein.
Tested Applications	ELISA, WB; WB: 1:500-1:3000
Form	Rabbit IgG in phosphate buffered saline (without Mg ²⁺ and Ca ²⁺), pH 7.4, 150mM NaCl, 0.02% sodium azide and 50% glycerol.
Purification Method	The antibody was affinity-purified from rabbit antiserum by affinity-chromatography using epitope-specific immunogen.
Clonality	Polyclonal
Alias	RALBP1; RALBP1 associated Eps domain containing 1; RalBP1-associated Eps domain-containing protein 1; RalBP1-interacting protein 1; REPS1
Product Type	Polyclonal Antibody
Immunogen Species	Homo sapiens (Human)
Target Names	REPS1

Image



Western blot analysis of extracts from rat heart cells, using REPS1 antibody.

Usage For Research Use Only. Not for use in diagnostic or therapeutic procedures.