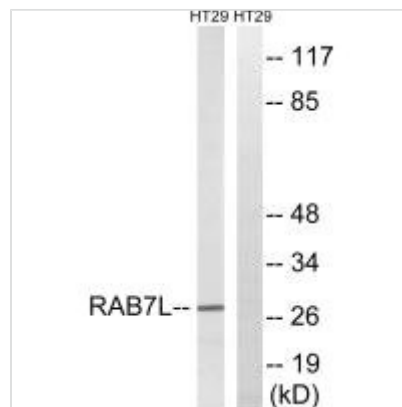




RAB29 Antibody

Product Code	CSB-PA970360
Storage	Upon receipt, store at -20°C or -80°C. Avoid repeated freeze.
Uniprot No.	O14966
Immunogen	Synthesized peptide derived from internal of Human RAB7L1.
Raised In	Rabbit
Species Reactivity	Human,Mouse
Specificity	The antibody detects endogenous levels of total RAB7L1 protein.
Tested Applications	ELISA,WB;WB:1:500-1:3000
Form	Rabbit IgG in phosphate buffered saline (without Mg ²⁺ and Ca ²⁺), pH 7.4, 150mM NaCl, 0.02% sodium azide and 50% glycerol.
Purification Method	The antibody was affinity-purified from rabbit antiserum by affinity-chromatography using epitope-specific immunogen.
Clonality	Polyclonal
Alias	RAB7; member RAS oncogene family-like 1; RAB7L;
Product Type	Polyclonal Antibody
Immunogen Species	Homo sapiens (Human)
Target Names	RAB29

Image



Western blot analysis of extracts from HT-29 cells, using RAB7L1 antibody.

Usage

For Research Use Only. Not for use in diagnostic or therapeutic procedures.