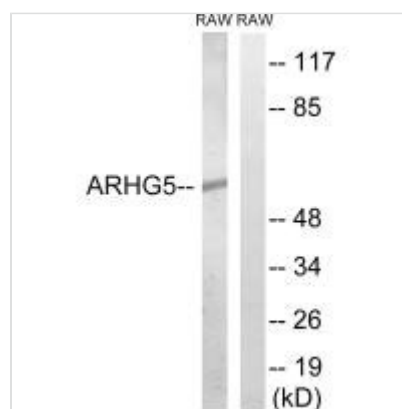




ARHGEF5 Antibody

| | |
|----------------------------|--|
| Product Code | CSB-PA124670 |
| Storage | Upon receipt, store at -20°C or -80°C. Avoid repeated freeze. |
| Uniprot No. | Q12774 |
| Immunogen | Synthesized peptide derived from internal of Human ARHGEF5. |
| Raised In | Rabbit |
| Species Reactivity | Human, Mouse |
| Specificity | The antibody detects endogenous levels of total ARHGEF5 protein. |
| Tested Applications | ELISA, WB; WB: 1:500-1:3000 |
| Form | Rabbit IgG in phosphate buffered saline (without Mg ²⁺ and Ca ²⁺), pH 7.4, 150mM NaCl, 0.02% sodium azide and 50% glycerol. |
| Purification Method | The antibody was affinity-purified from rabbit antiserum by affinity-chromatography using epitope-specific immunogen. |
| Clonality | Polyclonal |
| Alias | ARH5; guanine nucleotide regulatory protein TIM; Oncogene TIM; p60 TIM; Rho guanine nucleotide exchange factor 5 |
| Product Type | Polyclonal Antibody |
| Immunogen Species | Homo sapiens (Human) |
| Target Names | ARHGEF5 |

Image



Western blot analysis of extracts from RAW264.7 cells, using ARHGEF5 antibody.

Usage

For Research Use Only. Not for use in diagnostic or therapeutic procedures.