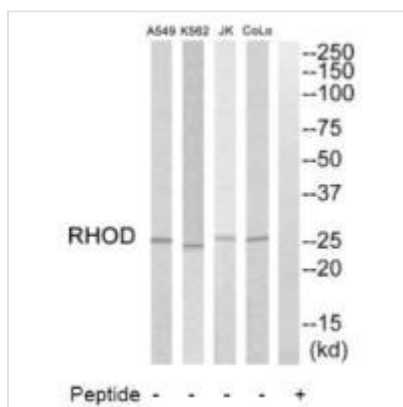




RHOD Antibody

Product Code	CSB-PA945646
Storage	Upon receipt, store at -20°C or -80°C. Avoid repeated freeze.
Uniprot No.	O00212
Immunogen	Synthesized peptide derived from internal of Human RHOD.
Raised In	Rabbit
Species Reactivity	Human
Specificity	The antibody detects endogenous levels of total RHOD protein.
Tested Applications	ELISA, WB; WB: 1:500-1:3000
Form	Rabbit IgG in phosphate buffered saline (without Mg ²⁺ and Ca ²⁺), pH 7.4, 150mM NaCl, 0.02% sodium azide and 50% glycerol.
Purification Method	The antibody was affinity-purified from rabbit antiserum by affinity-chromatography using epitope-specific immunogen.
Clonality	Polyclonal
Alias	Rho-related GTP-binding protein RhoD; Rho-related protein HP1; RhoHP1; RHOD;
Product Type	Polyclonal Antibody
Immunogen Species	Homo sapiens (Human)
Target Names	RHOD

Image



Western blot analysis of extracts from COLO205 cells, K562 cells, Jurkat cells and A549 cells, using RHOD antibody.

Usage

For Research Use Only. Not for use in diagnostic or therapeutic procedures.