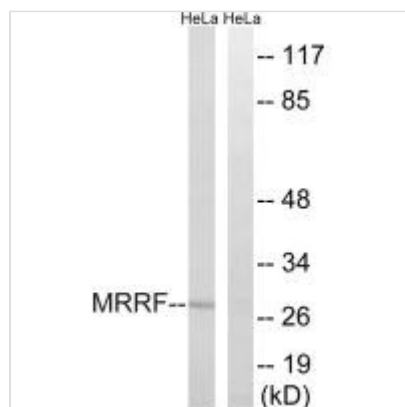




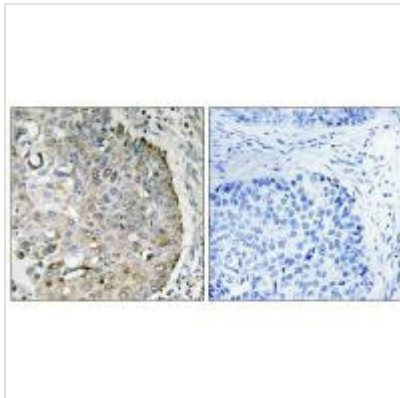
MRRF Antibody

Product Code	CSB-PA283689
Storage	Upon receipt, store at -20°C or -80°C. Avoid repeated freeze.
Uniprot No.	Q96E11
Immunogen	Synthesized peptide derived from internal of Human MRRF.
Raised In	Rabbit
Species Reactivity	Human
Specificity	The antibody detects endogenous levels of total MRRF protein.
Tested Applications	ELISA, WB, IHC; WB:1:500-1:3000, IHC:1:50-1:100
Form	Rabbit IgG in phosphate buffered saline (without Mg ²⁺ and Ca ²⁺), pH 7.4, 150mM NaCl, 0.02% sodium azide and 50% glycerol.
Purification Method	The antibody was affinity-purified from rabbit antiserum by affinity-chromatography using epitope-specific immunogen.
Clonality	Polyclonal
Alias	Ribosome-recycling factor; mitochondrial; RRF; Ribosome-releasing factor; mitochondrial
Product Type	Polyclonal Antibody
Immunogen Species	Homo sapiens (Human)
Target Names	MRRF

Image



Western blot analysis of extracts from HeLa cells, using MRRF antibody.



Immunohistochemistry analysis of paraffin-embedded human lung carcinoma tissue, using MRRF antibody.