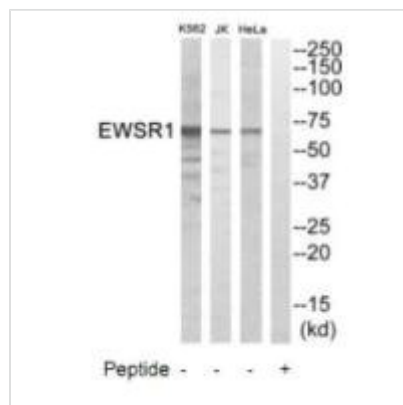




EWSR1 Antibody

Product Code	CSB-PA216510
Storage	Upon receipt, store at -20°C or -80°C. Avoid repeated freeze.
Uniprot No.	Q01844
Immunogen	Synthesized peptide derived from internal of Human EWSR1.
Raised In	Rabbit
Species Reactivity	Human
Specificity	The antibody detects endogenous levels of total EWSR1 protein.
Tested Applications	ELISA, WB; WB: 1:500-1:3000
Form	Rabbit IgG in phosphate buffered saline (without Mg ²⁺ and Ca ²⁺), pH 7.4, 150mM NaCl, 0.02% sodium azide and 50% glycerol.
Purification Method	The antibody was affinity-purified from rabbit antiserum by affinity-chromatography using epitope-specific immunogen.
Clonality	Polyclonal
Alias	EWS oncogene; Ewing sarcoma breakpoint region 1 protein;
Product Type	Polyclonal Antibody
Immunogen Species	Homo sapiens (Human)
Target Names	EWSR1

Image



Western blot analysis of extracts from HeLa cells, Jurkat cells and K562 cells, using EWSR1 antibody.

Usage

For Research Use Only. Not for use in diagnostic or therapeutic procedures.