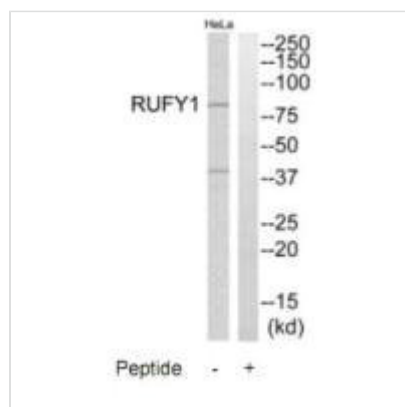




RUFY1 Antibody

Product Code	CSB-PA073117
Storage	Upon receipt, store at -20°C or -80°C. Avoid repeated freeze.
Uniprot No.	Q96T51
Immunogen	Synthesized peptide derived from internal of Human RUFY1.
Raised In	Rabbit
Species Reactivity	Human
Specificity	The antibody detects endogenous levels of total RUFY1 protein.
Tested Applications	ELISA,WB;WB:1:500-1:3000
Form	Rabbit IgG in phosphate buffered saline (without Mg ²⁺ and Ca ²⁺), pH 7.4, 150mM NaCl, 0.02% sodium azide and 50% glycerol.
Purification Method	The antibody was affinity-purified from rabbit antiserum by affinity-chromatography using epitope-specific immunogen.
Clonality	Polyclonal
Alias	FYVE-finger protein EIP1; Zinc finger FYVE domain-containing protein 12; La-binding protein 1; Rab4-interacting protein;
Product Type	Polyclonal Antibody
Immunogen Species	Homo sapiens (Human)
Target Names	RUFY1

Image



Western blot analysis of extracts from HeLa cells, using RUFY1 antibody.

Usage

For Research Use Only. Not for use in diagnostic or therapeutic procedures.