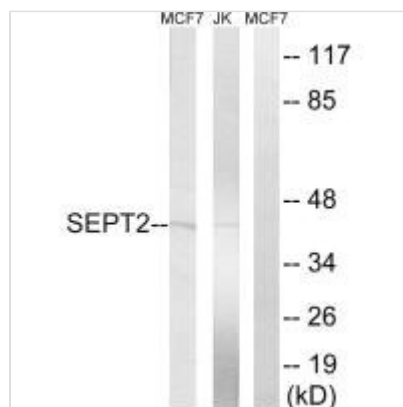




SEPT2 Antibody

Product Code	CSB-PA250410
Storage	Upon receipt, store at -20°C or -80°C. Avoid repeated freeze.
Uniprot No.	Q15019
Immunogen	Synthesized peptide derived from internal of Human SEPT2.
Raised In	Rabbit
Species Reactivity	Human
Specificity	The antibody detects endogenous levels of total SEPT2 protein.
Tested Applications	ELISA,WB;WB:1:500-1:3000
Form	Rabbit IgG in phosphate buffered saline (without Mg ²⁺ and Ca ²⁺), pH 7.4, 150mM NaCl, 0.02% sodium azide and 50% glycerol.
Purification Method	The antibody was affinity-purified from rabbit antiserum by affinity-chromatography using epitope-specific immunogen.
Clonality	Polyclonal
Alias	Protein NEDD5; Septin-2; Neural precursor cell expressed developmentally down-regulated protein 5; DIFF6; KIAA0158
Product Type	Polyclonal Antibody
Immunogen Species	Homo sapiens (Human)
Target Names	SEPT2

Image



Western blot analysis of extracts from Jurkat cells and MCF-7 cells, using SEPT2 antibody.

Usage For Research Use Only. Not for use in diagnostic or therapeutic procedures.