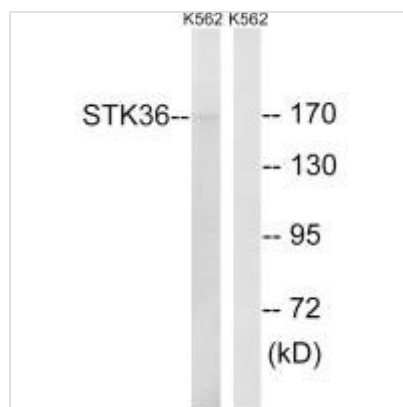




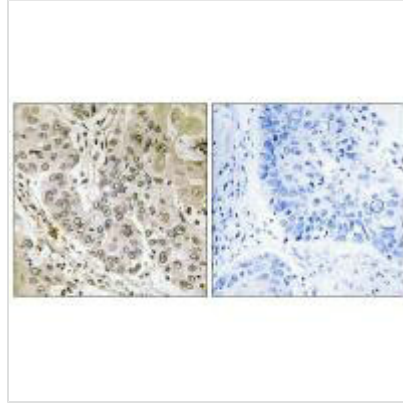
STK36 Antibody

Product Code	CSB-PA779331
Storage	Upon receipt, store at -20°C or -80°C. Avoid repeated freeze.
Uniprot No.	Q9NRP7
Immunogen	Synthesized peptide derived from internal of Human STK36.
Raised In	Rabbit
Species Reactivity	Human
Specificity	The antibody detects endogenous levels of total STK36 protein.
Tested Applications	ELISA,WB,IHC;WB:1:500-1:3000,IHC:1:50-1:100
Form	Rabbit IgG in phosphate buffered saline (without Mg ²⁺ and Ca ²⁺), pH 7.4, 150mM NaCl, 0.02% sodium azide and 50% glycerol.
Purification Method	The antibody was affinity-purified from rabbit antiserum by affinity-chromatography using epitope-specific immunogen.
Clonality	Polyclonal
Alias	Serine/threonine-protein kinase 36 EC 2.7.11.1; Fused homolog STK36;
Product Type	Polyclonal Antibody
Immunogen Species	Homo sapiens (Human)
Target Names	STK36

Image



Western blot analysis of extracts from K562 cells, using STK36 antibody.



Immunohistochemistry analysis of paraffin-embedded human lung carcinoma tissue, using STK36 antibody.

Usage

For Research Use Only. Not for use in diagnostic or therapeutic procedures.