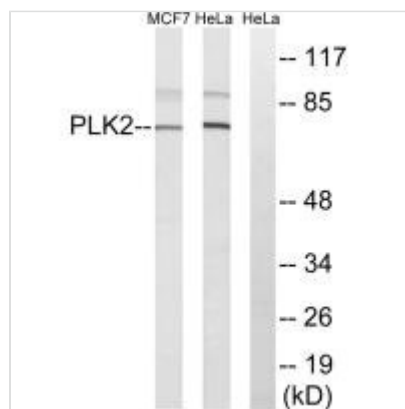




PLK2 Antibody

Product Code	CSB-PA590505
Storage	Upon receipt, store at -20°C or -80°C. Avoid repeated freeze.
Uniprot No.	Q9NYY3
Immunogen	Synthesized peptide derived from internal of Human PLK2.
Raised In	Rabbit
Species Reactivity	Human
Specificity	The antibody detects endogenous levels of total PLK2 protein.
Tested Applications	ELISA, WB; WB: 1:500-1:3000
Form	Rabbit IgG in phosphate buffered saline (without Mg ²⁺ and Ca ²⁺), pH 7.4, 150mM NaCl, 0.02% sodium azide and 50% glycerol.
Purification Method	The antibody was affinity-purified from rabbit antiserum by affinity-chromatography using epitope-specific immunogen.
Clonality	Polyclonal
Alias	EC 2.7.11.21; Polo-like kinase 1; PLK-2; Serine/threonine-protein kinase SNK; Serum-inducible kinase
Product Type	Polyclonal Antibody
Immunogen Species	Homo sapiens (Human)
Target Names	PLK2

Image



Western blot analysis of extracts from HeLa cells and MCF-7 cells, using PLK2 antibody.