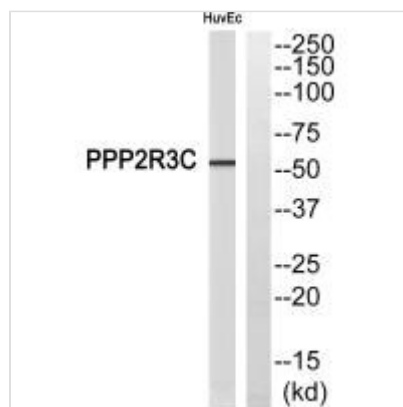




PPP2R3C Antibody

Product Code	CSB-PA964594
Storage	Upon receipt, store at -20°C or -80°C. Avoid repeated freeze.
Uniprot No.	Q969Q6
Immunogen	Synthesized peptide derived from internal of Human PPP2R3C.
Raised In	Rabbit
Species Reactivity	Human
Specificity	The antibody detects endogenous levels of total PPP2R3C protein.
Tested Applications	ELISA,WB;WB:1:500-1:3000
Form	Rabbit IgG in phosphate buffered saline (without Mg ²⁺ and Ca ²⁺), pH 7.4, 150mM NaCl, 0.02% sodium azide and 50% glycerol.
Purification Method	The antibody was affinity-purified from rabbit antiserum by affinity-chromatography using epitope-specific immunogen.
Clonality	Polyclonal
Alias	Protein phosphatase subunit G5PR; Rhabdomyosarcoma antigen MU-RMS-40.6A; Rhabdomyosarcoma antigen Mu-RMS-40.6C;
Product Type	Polyclonal Antibody
Immunogen Species	Homo sapiens (Human)
Target Names	PPP2R3C

Image



Western blot analysis of extracts from HuvEc cells, using PPP2R3C antibody.

Usage For Research Use Only. Not for use in diagnostic or therapeutic procedures.