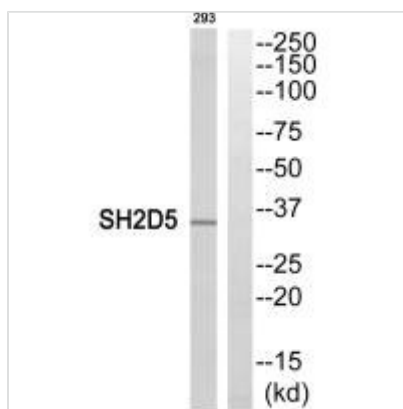




SH2D5 Antibody

Product Code	CSB-PA230830
Storage	Upon receipt, store at -20°C or -80°C. Avoid repeated freeze.
Uniprot No.	Q6ZV89
Immunogen	Synthesized peptide derived from C-terminal of Human SH2D5.
Raised In	Rabbit
Species Reactivity	Human
Specificity	The antibody detects endogenous levels of total SH2D5 protein.
Tested Applications	ELISA, WB; WB: 1:500-1:3000
Form	Rabbit IgG in phosphate buffered saline (without Mg ²⁺ and Ca ²⁺), pH 7.4, 150mM NaCl, 0.02% sodium azide and 50% glycerol.
Purification Method	The antibody was affinity-purified from rabbit antiserum by affinity-chromatography using epitope-specific immunogen.
Clonality	Polyclonal
Alias	SH2 domain-containing protein 5; SH2D5;
Product Type	Polyclonal Antibody
Immunogen Species	Homo sapiens (Human)
Target Names	SH2D5

Image



Western blot analysis of extracts from 293 cells, using SH2D5 antibody.

Usage

For Research Use Only. Not for use in diagnostic or therapeutic procedures.