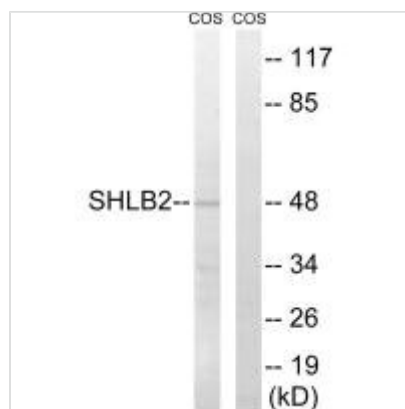




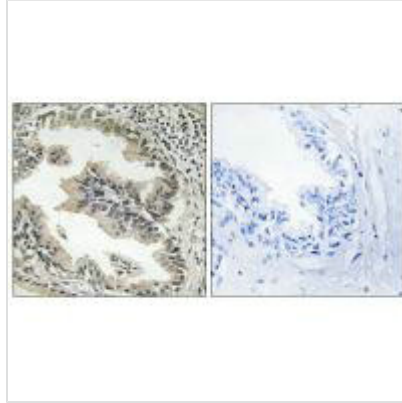
SH3GLB2 Antibody

Product Code	CSB-PA211990
Storage	Upon receipt, store at -20°C or -80°C. Avoid repeated freeze.
Uniprot No.	Q9NR46
Immunogen	Synthesized peptide derived from internal of Human SH3GLB2.
Raised In	Rabbit
Species Reactivity	Human,Mouse
Specificity	The antibody detects endogenous levels of total SH3GLB2 protein.
Tested Applications	ELISA,WB,IHC;WB:1:500-1:3000,IHC:1:50-1:100
Form	Rabbit IgG in phosphate buffered saline (without Mg ²⁺ and Ca ²⁺), pH 7.4, 150mM NaCl, 0.02% sodium azide and 50% glycerol.
Purification Method	The antibody was affinity-purified from rabbit antiserum by affinity-chromatography using epitope-specific immunogen.
Clonality	Polyclonal
Alias	endophilin B2; SH3 domain GRB2-like B2; SHLB2;
Product Type	Polyclonal Antibody
Immunogen Species	Homo sapiens (Human)
Target Names	SH3GLB2

Image



Western blot analysis of extracts from COS cells, using SH3GLB2 antibody.



Immunohistochemistry analysis of paraffin-embedded human prostate carcinoma tissue using SH3GLB2 antibody.

Usage

For Research Use Only. Not for use in diagnostic or therapeutic procedures.