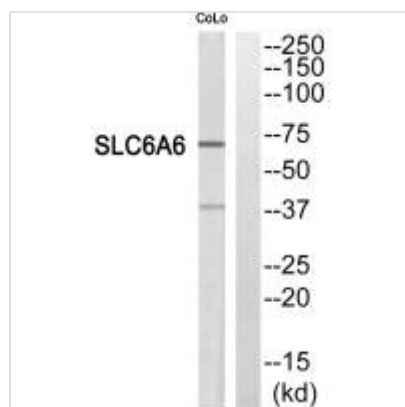




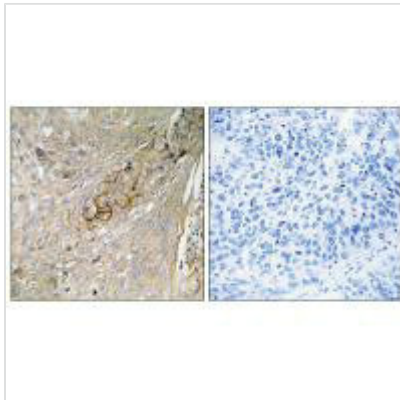
SLC6A6 Antibody

Product Code	CSB-PA546856
Storage	Upon receipt, store at -20°C or -80°C. Avoid repeated freeze.
Uniprot No.	P31641
Immunogen	Synthesized peptide derived from internal of Human SC6A6.
Raised In	Rabbit
Species Reactivity	Human,Mouse
Specificity	The antibody detects endogenous levels of total SC6A6 protein.
Tested Applications	ELISA,WB,IHC;WB:1:500-1:3000,IHC:1:50-1:100
Form	Rabbit IgG in phosphate buffered saline (without Mg ²⁺ and Ca ²⁺), pH 7.4, 150mM NaCl, 0.02% sodium azide and 50% glycerol.
Purification Method	The antibody was affinity-purified from rabbit antiserum by affinity-chromatography using epitope-specific immunogen.
Clonality	Polyclonal
Alias	Sodium- and chloride-dependent taurine transporter; SLC6A6;
Product Type	Polyclonal Antibody
Immunogen Species	Homo sapiens (Human)
Target Names	SLC6A6

Image



Western blot analysis of extracts from COLO205 cells, using SC6A6 antibody.



Immunohistochemistry analysis of paraffin-embedded human lung carcinoma tissue using SC6A6 antibody.