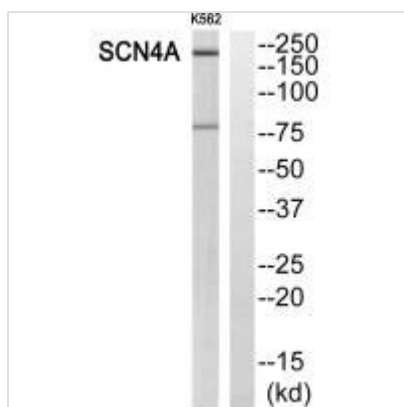




SCN4A Antibody

Product Code	CSB-PA615738
Storage	Upon receipt, store at -20°C or -80°C. Avoid repeated freeze.
Uniprot No.	P35499
Immunogen	Synthesized peptide derived from internal of Human SCN4A.
Raised In	Rabbit
Species Reactivity	Human
Specificity	The antibody detects endogenous levels of total SCN4A protein.
Tested Applications	ELISA,WB;WB:1:500-1:3000
Form	Rabbit IgG in phosphate buffered saline (without Mg ²⁺ and Ca ²⁺), pH 7.4, 150mM NaCl, 0.02% sodium azide and 50% glycerol.
Purification Method	The antibody was affinity-purified from rabbit antiserum by affinity-chromatography using epitope-specific immunogen.
Clonality	Polyclonal
Alias	Sodium channel protein type 4 subunit alpha; Sodium channel protein type IV subunit alpha; Voltage-gated sodium channel subunit alpha Nav1.4; Sodium channel protein skeletal muscle subunit alpha; SkM1
Product Type	Polyclonal Antibody
Immunogen Species	Homo sapiens (Human)
Target Names	SCN4A

Image



Western blot analysis of extracts from K562 cells, using SCN4A antibody.

Usage For Research Use Only. Not for use in diagnostic or therapeutic procedures.