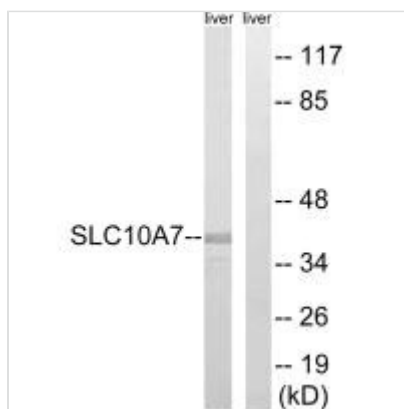




SLC10A7 Antibody

Product Code	CSB-PA944915
Storage	Upon receipt, store at -20°C or -80°C. Avoid repeated freeze.
Uniprot No.	Q0GE19
Immunogen	Synthesized peptide derived from internal of Human SLC10A7.
Raised In	Rabbit
Species Reactivity	Human
Specificity	The antibody detects endogenous levels of total SLC10A7 protein.
Tested Applications	ELISA,WB;WB:1:500-1:3000
Form	Rabbit IgG in phosphate buffered saline (without Mg ²⁺ and Ca ²⁺), pH 7.4, 150mM NaCl, 0.02% sodium azide and 50% glycerol.
Purification Method	The antibody was affinity-purified from rabbit antiserum by affinity-chromatography using epitope-specific immunogen.
Clonality	Polyclonal
Alias	Sodium/bile acid cotransporter 7; Na(+)/bile acid cotransporter 7; Solute carrier family 10 member 7; SLC10A7; C4orf13
Product Type	Polyclonal Antibody
Immunogen Species	Homo sapiens (Human)
Target Names	SLC10A7

Image



Western blot analysis of extracts from mouse liver cells, using SLC10A7 antibody.

Usage

For Research Use Only. Not for use in diagnostic or therapeutic procedures.