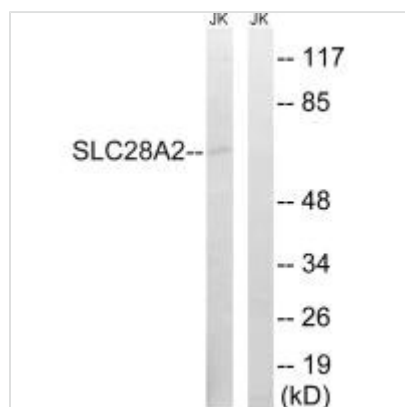




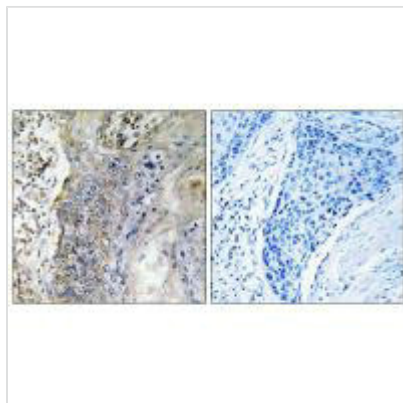
SLC28A2 Antibody

Product Code	CSB-PA292446
Storage	Upon receipt, store at -20°C or -80°C. Avoid repeated freeze.
Uniprot No.	O43868
Immunogen	Synthesized peptide derived from internal of Human SLC28A2.
Raised In	Rabbit
Species Reactivity	Human
Specificity	The antibody detects endogenous levels of total SLC28A2 protein.
Tested Applications	ELISA,WB,IHC;WB:1:500-1:3000,IHC:1:50-1:100
Form	Rabbit IgG in phosphate buffered saline (without Mg ²⁺ and Ca ²⁺), pH 7.4, 150mM NaCl, 0.02% sodium azide and 50% glycerol.
Purification Method	The antibody was affinity-purified from rabbit antiserum by affinity-chromatography using epitope-specific immunogen.
Clonality	Polyclonal
Alias	Sodium/nucleoside cotransporter 2; Na(+)/nucleoside cotransporter 2; Sodium-coupled nucleoside transporter 2; Concentrative nucleoside transporter 2; CNT 2
Product Type	Polyclonal Antibody
Immunogen Species	Homo sapiens (Human)
Target Names	SLC28A2

Image



Western blot analysis of extracts from Jurkat cells, using SLC28A2 antibody.



Immunohistochemistry analysis of paraffin-embedded human lung carcinoma tissue, using SLC28A2 antibody.

Usage

For Research Use Only. Not for use in diagnostic or therapeutic procedures.