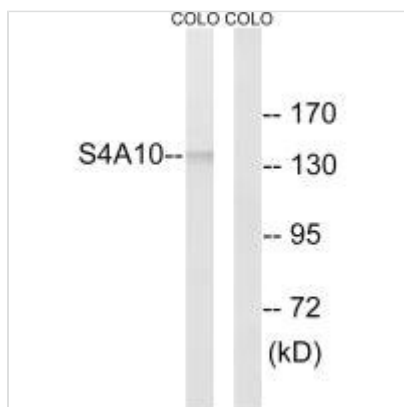




SLC4A10/SLC4A8 Antibody

Product Code	CSB-PA859849
Storage	Upon receipt, store at -20°C or -80°C. Avoid repeated freeze.
Uniprot No.	Q6U841
Immunogen	Synthesized peptide derived from internal of Human SLC4A8/10.
Raised In	Rabbit
Species Reactivity	Human, Mouse
Specificity	The antibody detects endogenous levels of total SLC4A8/10 protein.
Tested Applications	ELISA, WB; WB: 1:500-1:3000
Form	Rabbit IgG in phosphate buffered saline (without Mg ²⁺ and Ca ²⁺), pH 7.4, 150mM NaCl, 0.02% sodium azide and 50% glycerol.
Purification Method	The antibody was affinity-purified from rabbit antiserum by affinity-chromatography using epitope-specific immunogen.
Clonality	Polyclonal
Alias	electroneutral Na ⁺ - driven Cl ⁻ -HCO ₃ ⁻ exchanger; electroneutral sodium bicarbonate exchanger 1; k-NBC3; NBC; NBC3
Product Type	Polyclonal Antibody
Immunogen Species	Homo sapiens (Human)
Target Names	SLC4A10/SLC4A8

Image



Western blot analysis of extracts from COLO cells, using SLC4A8/10 antibody.

Usage For Research Use Only. Not for use in diagnostic or therapeutic procedures.