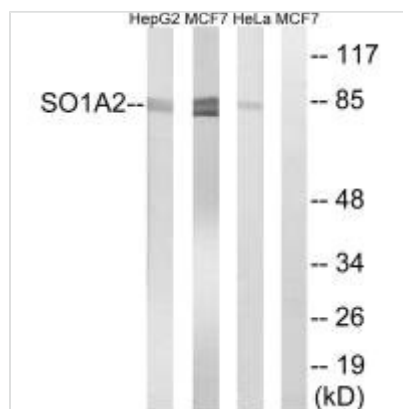




SLCO1A2 Antibody

Product Code	CSB-PA983558
Storage	Upon receipt, store at -20°C or -80°C. Avoid repeated freeze.
Uniprot No.	P46721
Immunogen	Synthesized peptide derived from internal of Human SLCO1A2.
Raised In	Rabbit
Species Reactivity	Human
Specificity	The antibody detects endogenous levels of total SLCO1A2 protein.
Tested Applications	ELISA, WB; WB: 1:500-1:3000
Form	Rabbit IgG in phosphate buffered saline (without Mg ²⁺ and Ca ²⁺), pH 7.4, 150mM NaCl, 0.02% sodium azide and 50% glycerol.
Purification Method	The antibody was affinity-purified from rabbit antiserum by affinity-chromatography using epitope-specific immunogen.
Clonality	Polyclonal
Alias	OATP; OATP-A; OATP1; OATP1A2; organic anion transporting polypeptide A
Product Type	Polyclonal Antibody
Immunogen Species	Homo sapiens (Human)
Target Names	SLCO1A2

Image



Western blot analysis of extracts from HepG2 cells, MCF-7 cells and HeLa cells, using SLCO1A2 antibody.

Usage

For Research Use Only. Not for use in diagnostic or therapeutic procedures.