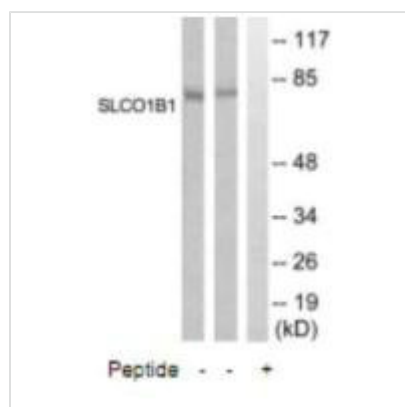




SLCO1B1 Antibody

| | |
|----------------------------|---|
| Product Code | CSB-PA081369 |
| Storage | Upon receipt, store at -20°C or -80°C. Avoid repeated freeze. |
| Uniprot No. | Q9Y6L6 |
| Immunogen | Synthesized peptide derived from internal of Human SLCO1B1. |
| Raised In | Rabbit |
| Species Reactivity | Human |
| Specificity | The antibody detects endogenous levels of total SLCO1B1 protein. |
| Tested Applications | ELISA, WB; WB: 1:500-1:3000 |
| Form | Rabbit IgG in phosphate buffered saline (without Mg ²⁺ and Ca ²⁺), pH 7.4, 150mM NaCl, 0.02% sodium azide and 50% glycerol. |
| Purification Method | The antibody was affinity-purified from rabbit antiserum by affinity-chromatography using epitope-specific immunogen. |
| Clonality | Polyclonal |
| Alias | Solute carrier family 21 member 6; Sodium-independent organic anion-transporting polypeptide 2; OATP 2; Liver-specific organic anion transporter 1; LST-1 |
| Product Type | Polyclonal Antibody |
| Immunogen Species | Homo sapiens (Human) |
| Target Names | SLCO1B1 |

Image



Western blot analysis of extracts from COLO205 and Jurkat cells, using SLCO1B1 antibody.

Usage

For Research Use Only. Not for use in diagnostic or therapeutic procedures.