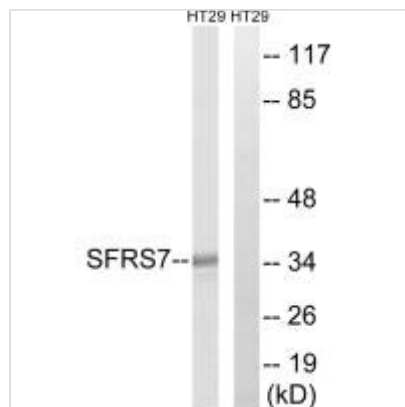




SRSF7 Antibody

Product Code	CSB-PA244022
Storage	Upon receipt, store at -20°C or -80°C. Avoid repeated freeze.
Uniprot No.	Q16629
Immunogen	Synthesized peptide derived from internal of Human SFRS7.
Raised In	Rabbit
Species Reactivity	Human,Mouse
Specificity	The antibody detects endogenous levels of total SFRS7 protein.
Tested Applications	ELISA,WB;WB:1:500-1:3000
Form	Rabbit IgG in phosphate buffered saline (without Mg ²⁺ and Ca ²⁺), pH 7.4, 150mM NaCl, 0.02% sodium azide and 50% glycerol.
Purification Method	The antibody was affinity-purified from rabbit antiserum by affinity-chromatography using epitope-specific immunogen.
Clonality	Polyclonal
Alias	SFR7; Splicing factor 9G8; Splicing factor; arginine/serine-rich 7;
Product Type	Polyclonal Antibody
Immunogen Species	Homo sapiens (Human)
Target Names	SRSF7

Image



Western blot analysis of extracts from HT-29 cells, using SFRS7 antibody.

Usage

For Research Use Only. Not for use in diagnostic or therapeutic procedures.