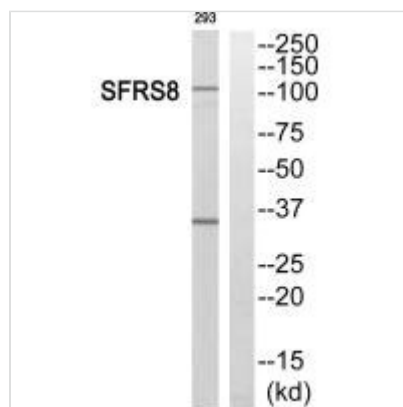




SFSWAP Antibody

Product Code	CSB-PA571441
Storage	Upon receipt, store at -20°C or -80°C. Avoid repeated freeze.
Uniprot No.	Q12872
Immunogen	Synthesized peptide derived from internal of Human SFRS8.
Raised In	Rabbit
Species Reactivity	Human
Specificity	The antibody detects endogenous levels of total SFRS8 protein.
Tested Applications	ELISA,WB;WB:1:500-1:3000
Form	Rabbit IgG in phosphate buffered saline (without Mg ²⁺ and Ca ²⁺), pH 7.4, 150mM NaCl, 0.02% sodium azide and 50% glycerol.
Purification Method	The antibody was affinity-purified from rabbit antiserum by affinity-chromatography using epitope-specific immunogen.
Clonality	Polyclonal
Alias	Splicing factor; arginine/serine-rich 8; Suppressor of white apricot protein homolog; SFRS8; SWAP
Product Type	Polyclonal Antibody
Immunogen Species	Homo sapiens (Human)
Target Names	SFSWAP

Image



Western blot analysis of extracts from 293 cells, using SFRS8 antibody.

Usage For Research Use Only. Not for use in diagnostic or therapeutic procedures.