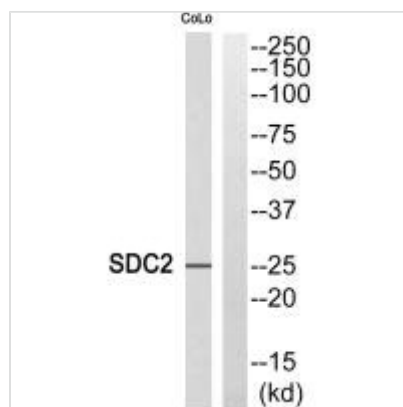




SDC2 Antibody

Product Code	CSB-PA058882
Storage	Upon receipt, store at -20°C or -80°C. Avoid repeated freeze.
Uniprot No.	P34741
Immunogen	Synthesized peptide derived from internal of Human SDC2.
Raised In	Rabbit
Species Reactivity	Human
Specificity	The antibody detects endogenous levels of total SDC2 protein.
Tested Applications	ELISA,WB;WB:1:500-1:3000
Form	Rabbit IgG in phosphate buffered saline (without Mg ²⁺ and Ca ²⁺), pH 7.4, 150mM NaCl, 0.02% sodium azide and 50% glycerol.
Purification Method	The antibody was affinity-purified from rabbit antiserum by affinity-chromatography using epitope-specific immunogen.
Clonality	Polyclonal
Alias	SYND2; Fibroglycan; Heparan sulfate proteoglycan core protein; HSPG;
Product Type	Polyclonal Antibody
Immunogen Species	Homo sapiens (Human)
Target Names	SDC2

Image



Western blot analysis of extracts from COLO cells, using SDC2 antibody.

Usage

For Research Use Only. Not for use in diagnostic or therapeutic procedures.