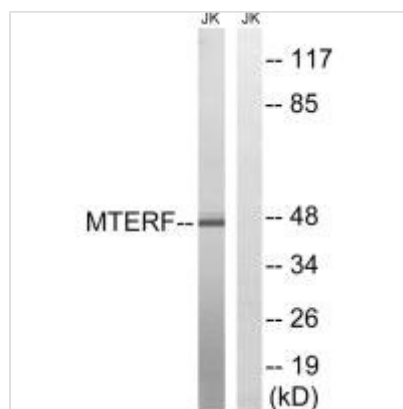




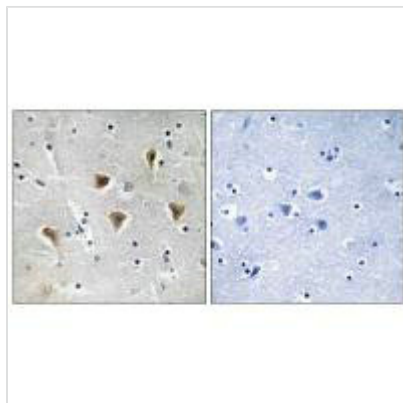
MTERF1 Antibody

Product Code	CSB-PA697477
Storage	Upon receipt, store at -20°C or -80°C. Avoid repeated freeze.
Uniprot No.	Q99551
Immunogen	Synthesized peptide derived from internal of Human MTERF.
Raised In	Rabbit
Species Reactivity	Human
Specificity	The antibody detects endogenous levels of total MTERF protein.
Tested Applications	ELISA,WB,IHC;WB:1:500-1:3000,IHC:1:50-1:100
Form	Rabbit IgG in phosphate buffered saline (without Mg ²⁺ and Ca ²⁺), pH 7.4, 150mM NaCl, 0.02% sodium azide and 50% glycerol.
Purification Method	The antibody was affinity-purified from rabbit antiserum by affinity-chromatography using epitope-specific immunogen.
Clonality	Polyclonal
Alias	MGC131634; mitochondrial transcription termination factor 1;
Product Type	Polyclonal Antibody
Immunogen Species	Homo sapiens (Human)
Target Names	MTERF1

Image



Western blot analysis of extracts from Jurkat cells, using MTERF antibody.



Immunohistochemistry analysis of paraffin-embedded human brain tissue using MTERF antibody.

Usage

For Research Use Only. Not for use in diagnostic or therapeutic procedures.