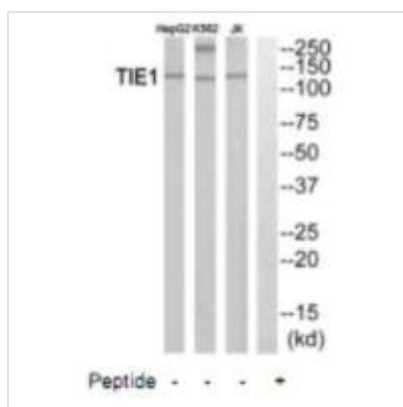




TIE1 Antibody

Product Code	CSB-PA201956
Storage	Upon receipt, store at -20°C or -80°C. Avoid repeated freeze.
Uniprot No.	P35590
Immunogen	Synthesized peptide derived from internal of Human TIE1.
Raised In	Rabbit
Species Reactivity	Human
Specificity	The antibody detects endogenous levels of total TIE1 protein.
Tested Applications	ELISA,WB;WB:1:500-1:3000
Form	Rabbit IgG in phosphate buffered saline (without Mg ²⁺ and Ca ²⁺), pH 7.4, 150mM NaCl, 0.02% sodium azide and 50% glycerol.
Purification Method	The antibody was affinity-purified from rabbit antiserum by affinity-chromatography using epitope-specific immunogen.
Clonality	Polyclonal
Alias	TIE; Tyrosine-protein kinase receptor Tie-1 precursor;
Product Type	Polyclonal Antibody
Immunogen Species	Homo sapiens (Human)
Target Names	TIE1

Image



Western blot analysis of extracts from HepG2 cells, K562 cells and Jurkat cells, using TIE1 antibody.

Usage

For Research Use Only. Not for use in diagnostic or therapeutic procedures.