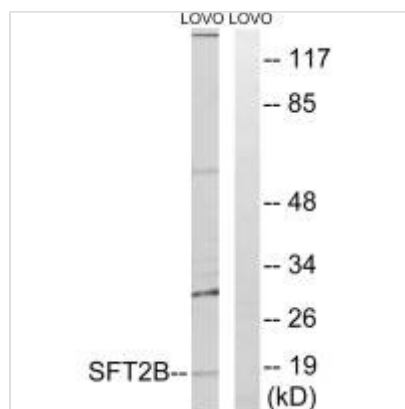




SFT2D2 Antibody

Product Code	CSB-PA843175
Storage	Upon receipt, store at -20°C or -80°C. Avoid repeated freeze.
Uniprot No.	O95562
Immunogen	Synthesized peptide derived from internal of Human SFT2B.
Raised In	Rabbit
Species Reactivity	Human,Mouse
Specificity	The antibody detects endogenous levels of total SFT2B protein.
Tested Applications	ELISA,WB;WB:1:500-1:3000
Form	Rabbit IgG in phosphate buffered saline (without Mg ²⁺ and Ca ²⁺), pH 7.4, 150mM NaCl, 0.02% sodium azide and 50% glycerol.
Purification Method	The antibody was affinity-purified from rabbit antiserum by affinity-chromatography using epitope-specific immunogen.
Clonality	Polyclonal
Alias	dj747l4.c1.2; flj34085; rp4-747l4.1; sft2 domain containing 2; sft2b
Product Type	Polyclonal Antibody
Immunogen Species	Homo sapiens (Human)
Target Names	SFT2D2

Image



Western blot analysis of extracts from LOVO cells, using SFT2B antibody.