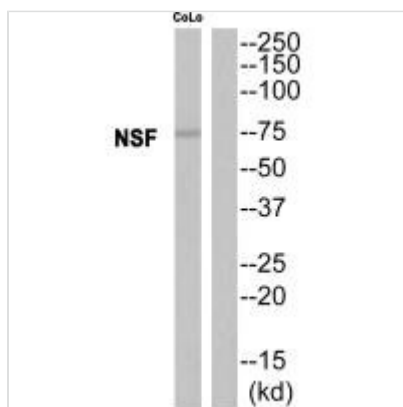




NSF Antibody

Product Code	CSB-PA214237
Storage	Upon receipt, store at -20°C or -80°C. Avoid repeated freeze.
Uniprot No.	P46459
Immunogen	Synthesized peptide derived from internal of Human NSF.
Raised In	Rabbit
Species Reactivity	Human,Mouse,Rat
Specificity	The antibody detects endogenous levels of total NSF protein.
Tested Applications	ELISA,WB;WB:1:500-1:3000
Form	Rabbit IgG in phosphate buffered saline (without Mg ²⁺ and Ca ²⁺), pH 7.4, 150mM NaCl, 0.02% sodium azide and 50% glycerol.
Purification Method	The antibody was affinity-purified from rabbit antiserum by affinity-chromatography using epitope-specific immunogen.
Clonality	Polyclonal
Alias	Vesicle-fusing ATPase; EC=3.6.4.6; N-ethylmaleimide-sensitive fusion protein; Short name=NEM-sensitive fusion protein; Vesicular-fusion protein NSF
Product Type	Polyclonal Antibody
Immunogen Species	Homo sapiens (Human)
Target Names	NSF

Image



Western blot analysis of extracts from CoLo cells, using NSF antibody.

Usage For Research Use Only. Not for use in diagnostic or therapeutic procedures.