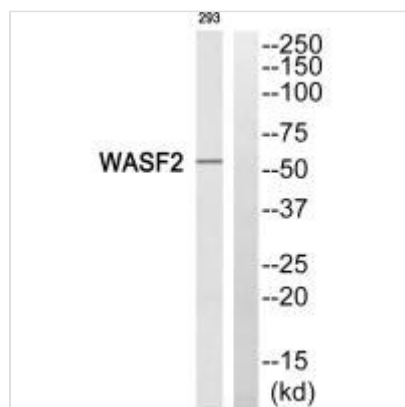




WASF2 Antibody

Product Code	CSB-PA123564
Storage	Upon receipt, store at -20°C or -80°C. Avoid repeated freeze.
Uniprot No.	Q9Y6W5
Immunogen	Synthesized peptide derived from internal of Human WASF2.
Raised In	Rabbit
Species Reactivity	Human
Specificity	The antibody detects endogenous levels of total WASF2 protein.
Tested Applications	ELISA, WB, IHC; WB: 1:500-1:3000, IHC: 1:50-1:100
Form	Rabbit IgG in phosphate buffered saline (without Mg ²⁺ and Ca ²⁺), pH 7.4, 150mM NaCl, 0.02% sodium azide and 50% glycerol.
Purification Method	The antibody was affinity-purified from rabbit antiserum by affinity-chromatography using epitope-specific immunogen.
Clonality	Polyclonal
Alias	Wiskott-Aldrich syndrome protein family member 2/WASP family protein member 2; Protein WAVE-2; Verprolin homology domain-containing protein 2; WASF2;
Product Type	Polyclonal Antibody
Immunogen Species	Homo sapiens (Human)
Target Names	WASF2

Image



Western blot analysis of extracts from 293 cells, using WASF2 antibody.



Immunohistochemistry analysis of paraffin-embedded human pancreas tissue, using WASF2 antibody.