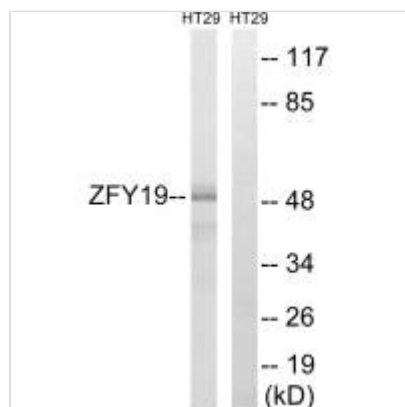




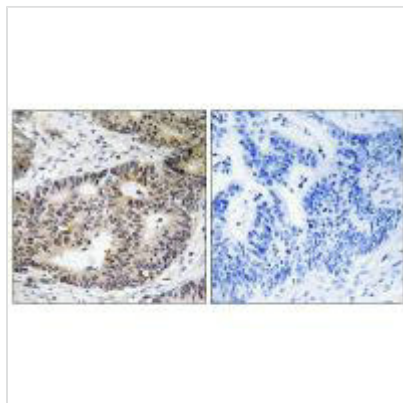
ZFYVE19 Antibody

Product Code	CSB-PA287149
Storage	Upon receipt, store at -20°C or -80°C. Avoid repeated freeze.
Uniprot No.	Q96K21
Immunogen	Synthesized peptide derived from internal of Human ZFYVE19.
Raised In	Rabbit
Species Reactivity	Human
Specificity	The antibody detects endogenous levels of total ZFYVE19 protein.
Tested Applications	ELISA,WB,IHC;WB:1:500-1:3000,IHC:1:50-1:100
Form	Rabbit IgG in phosphate buffered saline (without Mg ²⁺ and Ca ²⁺), pH 7.4, 150mM NaCl, 0.02% sodium azide and 50% glycerol.
Purification Method	The antibody was affinity-purified from rabbit antiserum by affinity-chromatography using epitope-specific immunogen.
Clonality	Polyclonal
Alias	MLL partner containing FYVE domain; MPFYVE; ZFY19; Zinc finger FYVE domain-containing protein 19;
Product Type	Polyclonal Antibody
Immunogen Species	Homo sapiens (Human)
Target Names	ZFYVE19

Image



Western blot analysis of extracts from HT-29 cells, using ZFYVE19 antibody.



Immunohistochemistry analysis of paraffin-embedded human colon carcinoma tissue using ZFYVE19 antibody.

Usage

For Research Use Only. Not for use in diagnostic or therapeutic procedures.