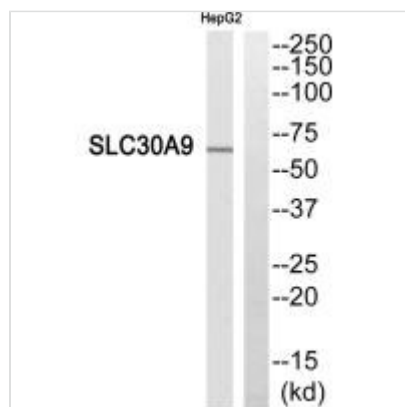




SLC30A9 Antibody

Product Code	CSB-PA216479
Storage	Upon receipt, store at -20°C or -80°C. Avoid repeated freeze.
Uniprot No.	Q6PML9
Immunogen	Synthesized peptide derived from internal of Human SLC30A9.
Raised In	Rabbit
Species Reactivity	Human
Specificity	The antibody detects endogenous levels of total SLC30A9 protein.
Tested Applications	ELISA, WB; WB: 1:500-1:3000
Form	Rabbit IgG in phosphate buffered saline (without Mg ²⁺ and Ca ²⁺), pH 7.4, 150mM NaCl, 0.02% sodium azide and 50% glycerol.
Purification Method	The antibody was affinity-purified from rabbit antiserum by affinity-chromatography using epitope-specific immunogen.
Clonality	Polyclonal
Alias	Zinc transporter 9ZnT-9; Solute carrier family 30 member 9; Human embryonic lung protein; HUEL SLC30A9;
Product Type	Polyclonal Antibody
Immunogen Species	Homo sapiens (Human)
Target Names	SLC30A9

Image



Western blot analysis of extracts from HepG2 cells, using SLC30A9 antibody.