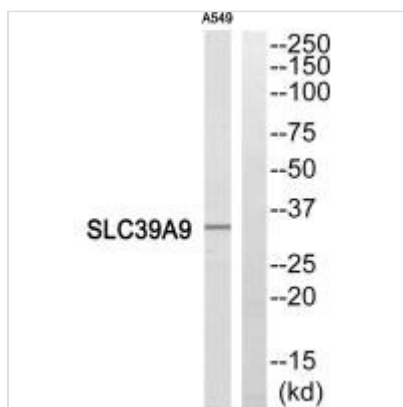




SLC39A9 Antibody

Product Code	CSB-PA161765
Storage	Upon receipt, store at -20°C or -80°C. Avoid repeated freeze.
Uniprot No.	Q9NUM3
Immunogen	Synthesized peptide derived from internal of Human SLC39A9.
Raised In	Rabbit
Species Reactivity	Human
Specificity	The antibody detects endogenous levels of total SLC39A9 protein.
Tested Applications	ELISA, WB; WB: 1:500-1:3000
Form	Rabbit IgG in phosphate buffered saline (without Mg ²⁺ and Ca ²⁺), pH 7.4, 150mM NaCl, 0.02% sodium azide and 50% glycerol.
Purification Method	The antibody was affinity-purified from rabbit antiserum by affinity-chromatography using epitope-specific immunogen.
Clonality	Polyclonal
Alias	Zinc transporter ZIP9; Zrt- and Irt-like protein 9; ZIP-9; Solute carrier family 39 member 9; SLC39A9
Product Type	Polyclonal Antibody
Immunogen Species	Homo sapiens (Human)
Target Names	SLC39A9

Image



Western blot analysis of extracts from A549 cells, using SLC39A9 antibody.

Usage For Research Use Only. Not for use in diagnostic or therapeutic procedures.