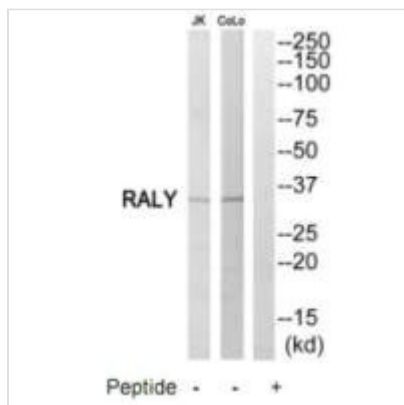




RALY Antibody

Product Code	CSB-PA249029
Storage	Upon receipt, store at -20°C or -80°C. Avoid repeated freeze.
Uniprot No.	Q9UKM9
Immunogen	Synthesized peptide derived from internal of Human RALY.
Raised In	Rabbit
Species Reactivity	Human
Specificity	The antibody detects endogenous levels of total RALY protein.
Tested Applications	ELISA, WB; WB: 1:500-1:3000
Form	Rabbit IgG in phosphate buffered saline (without Mg ²⁺ and Ca ²⁺), pH 7.4, 150mM NaCl, 0.02% sodium azide and 50% glycerol.
Purification Method	The antibody was affinity-purified from rabbit antiserum by affinity-chromatography using epitope-specific immunogen.
Clonality	Polyclonal
Alias	autoantigen p542; hnRNP associated with lethal yellow homolog; P542; RNA-binding protein Raly;
Product Type	Polyclonal Antibody
Immunogen Species	Homo sapiens (Human)
Target Names	RALY

Image



Western blot analysis of extracts from Jurkat cells and COLO205 cells, using RALY antibody.

Usage

For Research Use Only. Not for use in diagnostic or therapeutic procedures.