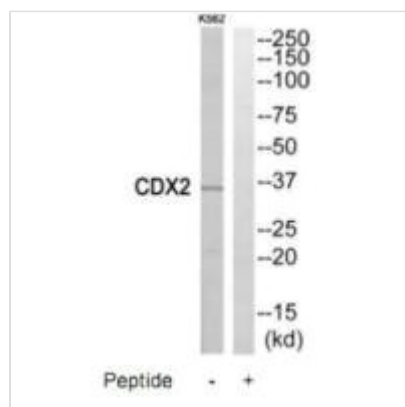




CDX2 Antibody

Product Code	CSB-PA193119
Storage	Upon receipt, store at -20°C or -80°C. Avoid repeated freeze.
Uniprot No.	Q99626
Immunogen	Synthesized peptide derived from internal of Human CDX2.
Raised In	Rabbit
Species Reactivity	Human
Specificity	The antibody detects endogenous levels of total CDX2 protein.
Tested Applications	ELISA,WB;WB:1:500-1:3000
Form	Rabbit IgG in phosphate buffered saline (without Mg ²⁺ and Ca ²⁺), pH 7.4, 150mM NaCl, 0.02% sodium azide and 50% glycerol.
Purification Method	The antibody was affinity-purified from rabbit antiserum by affinity-chromatography using epitope-specific immunogen.
Clonality	Polyclonal
Alias	caudal type homeo box transcription factor 2; Caudal-type homeobox protein 2; CDX-3; CDX3; Homeobox protein CDX-2
Product Type	Polyclonal Antibody
Immunogen Species	Homo sapiens (Human)
Target Names	CDX2

Image



Western blot analysis of extracts from K562 cells, using CDX2 antibody.

Usage

For Research Use Only. Not for use in diagnostic or therapeutic procedures.