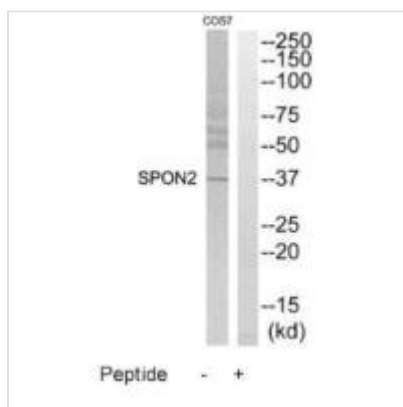




SPON2 Antibody

Product Code	CSB-PA150560
Storage	Upon receipt, store at -20°C or -80°C. Avoid repeated freeze.
Uniprot No.	Q9BUD6
Immunogen	Synthesized peptide derived from internal of Human SPON2.
Raised In	Rabbit
Species Reactivity	Human
Specificity	The antibody detects endogenous levels of total SPON2 protein.
Tested Applications	ELISA, WB; WB: 1:500-1:3000
Form	Rabbit IgG in phosphate buffered saline (without Mg ²⁺ and Ca ²⁺), pH 7.4, 150mM NaCl, 0.02% sodium azide and 50% glycerol.
Purification Method	The antibody was affinity-purified from rabbit antiserum by affinity-chromatography using epitope-specific immunogen.
Clonality	Polyclonal
Alias	Spondin-2; Mindin; Differentially expressed in cancerous and non-cancerous lung cells 1; DIL-1; SPON2
Product Type	Polyclonal Antibody
Immunogen Species	Homo sapiens (Human)
Target Names	SPON2

Image



Western blot analysis of extracts from COS7 cells, using SPON2 antibody.