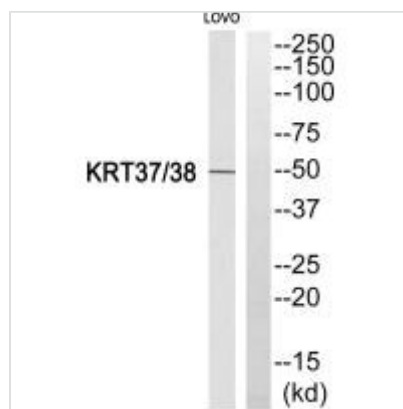




KRT38/KRT37 Antibody

Product Code	CSB-PA155888
Storage	Upon receipt, store at -20°C or -80°C. Avoid repeated freeze.
Uniprot No.	O76015
Immunogen	Synthesized peptide derived from internal of Human KRT37/38.
Raised In	Rabbit
Species Reactivity	Human
Specificity	The antibody detects endogenous levels of total KRT37/38 protein.
Tested Applications	ELISA,WB;WB:1:500-1:3000
Form	Rabbit IgG in phosphate buffered saline (without Mg ²⁺ and Ca ²⁺), pH 7.4, 150mM NaCl, 0.02% sodium azide and 50% glycerol.
Purification Method	The antibody was affinity-purified from rabbit antiserum by affinity-chromatography using epitope-specific immunogen.
Clonality	Polyclonal
Alias	Keratin; type I cuticular Ha8; Hair keratin; type I Ha8; Keratin-38
Product Type	Polyclonal Antibody
Immunogen Species	Homo sapiens (Human)
Target Names	KRT38/KRT37

Image



Western blot analysis of extracts from LOVO cells, using KRT37/38 antibody.

Usage For Research Use Only. Not for use in diagnostic or therapeutic procedures.