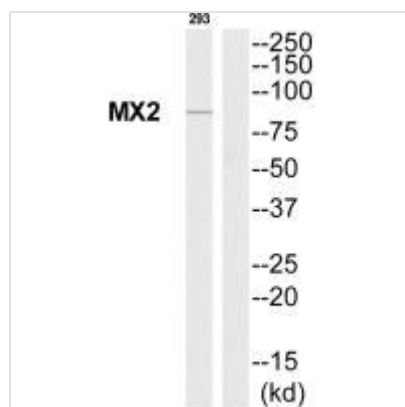




MX2 Antibody

Product Code	CSB-PA931467
Storage	Upon receipt, store at -20°C or -80°C. Avoid repeated freeze.
Uniprot No.	P20592
Immunogen	Synthesized peptide derived from Internal of Human MX2.
Raised In	Rabbit
Species Reactivity	Human
Specificity	The antibody detects endogenous levels of total MX2 protein.
Tested Applications	ELISA, WB; WB: 1:500-1:3000
Form	Rabbit IgG in phosphate buffered saline (without Mg ²⁺ and Ca ²⁺), pH 7.4, 150mM NaCl, 0.02% sodium azide and 50% glycerol.
Purification Method	The antibody was affinity-purified from rabbit antiserum by affinity-chromatography using epitope-specific immunogen.
Clonality	Polyclonal
Alias	Interferon-induced GTP-binding protein Mx2; Interferon-regulated resistance GTP-binding protein MxB; MX2; MXB; myxovirus (influenza virus) resistance 2 (mouse)
Product Type	Polyclonal Antibody
Immunogen Species	Homo sapiens (Human)
Target Names	MX2

Image



Western blot analysis of extracts from 293 cells, using MX2 antibody.