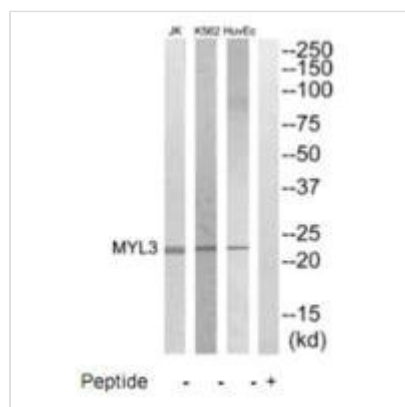




MYL3 Antibody

Product Code	CSB-PA559001
Storage	Upon receipt, store at -20°C or -80°C. Avoid repeated freeze.
Uniprot No.	P08590
Immunogen	Synthesized peptide derived from internal of Human MYL3.
Raised In	Rabbit
Species Reactivity	Human
Specificity	The antibody detects endogenous levels of total MYL3 protein.
Tested Applications	ELISA, WB; WB: 1:500-1:3000
Form	Rabbit IgG in phosphate buffered saline (without Mg ²⁺ and Ca ²⁺), pH 7.4, 150mM NaCl, 0.02% sodium azide and 50% glycerol.
Purification Method	The antibody was affinity-purified from rabbit antiserum by affinity-chromatography using epitope-specific immunogen.
Clonality	Polyclonal
Alias	Myosin light chain 3; Myosin light chain 1; slow-twitch muscle B/ventricular isoform; MLC1SB; Ventricular/slow twitch myosin alkali light chain
Product Type	Polyclonal Antibody
Immunogen Species	Homo sapiens (Human)
Target Names	MYL3

Image



Western blot analysis of extracts from HuvEC, K562 and Jurkat cells, using MYL3 antibody.