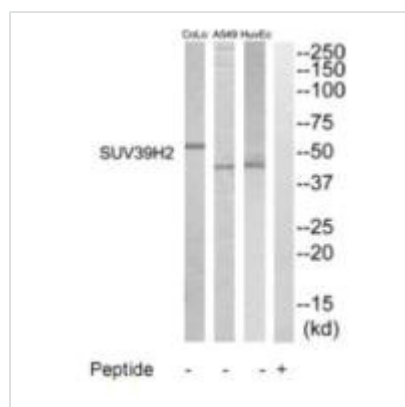




SUV39H2 Antibody

Product Code	CSB-PA566420
Storage	Upon receipt, store at -20°C or -80°C. Avoid repeated freeze.
Uniprot No.	Q9H511
Immunogen	Synthesized peptide derived from internal of Human SUV39H2.
Raised In	Rabbit
Species Reactivity	Human
Specificity	The antibody detects endogenous levels of total SUV39H2 protein.
Tested Applications	ELISA, WB; WB: 1:500-1:3000
Form	Rabbit IgG in phosphate buffered saline (without Mg ²⁺ and Ca ²⁺), pH 7.4, 150mM NaCl, 0.02% sodium azide and 50% glycerol.
Purification Method	The antibody was affinity-purified from rabbit antiserum by affinity-chromatography using epitope-specific immunogen.
Clonality	Polyclonal
Alias	Histone-lysine N-methyltransferase SUV39H2; Suppressor of variegation 3-9 homolog 2; Su(var)3-9 homolog 2; Histone H3-K9 methyltransferase 2; H3-K9-HMTase 2
Product Type	Polyclonal Antibody
Immunogen Species	Homo sapiens (Human)
Target Names	SUV39H2

Image



Western blot analysis of extracts from HuvEC, A549 and COLO205 cells, using SUV39H2 antibody.

Usage

For Research Use Only. Not for use in diagnostic or therapeutic procedures.