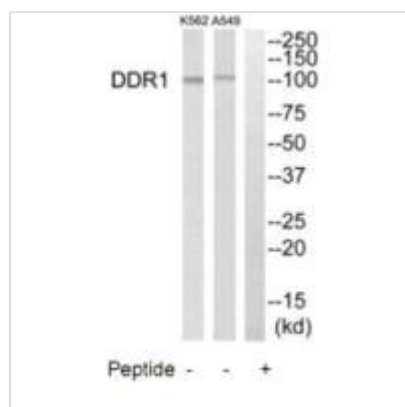




DDR1 Antibody

Product Code	CSB-PA978355
Storage	Upon receipt, store at -20°C or -80°C. Avoid repeated freeze.
Uniprot No.	Q08345
Immunogen	Synthesized peptide derived from internal of Human DDR1.
Raised In	Rabbit
Species Reactivity	Human
Specificity	The antibody detects endogenous levels of total DDR1 protein.
Tested Applications	ELISA, WB; WB: 1:500-1:3000
Form	Rabbit IgG in phosphate buffered saline (without Mg ²⁺ and Ca ²⁺), pH 7.4, 150mM NaCl, 0.02% sodium azide and 50% glycerol.
Purification Method	The antibody was affinity-purified from rabbit antiserum by affinity-chromatography using epitope-specific immunogen.
Clonality	Polyclonal
Alias	Epithelial discoidin domain-containing receptor 1; Epithelial discoidin domain receptor 1; CD167 antigen-like family member A; Cell adhesion kinase; Discoidin receptor tyrosine kinase
Product Type	Polyclonal Antibody
Immunogen Species	Homo sapiens (Human)
Target Names	DDR1

Image



Western blot analysis of extracts from K562 cells and A549 cells, using DDR1 antibody.