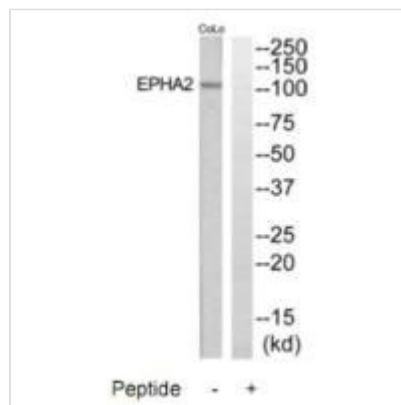




EPHA2 Antibody

Product Code	CSB-PA282887
Storage	Upon receipt, store at -20°C or -80°C. Avoid repeated freeze.
Uniprot No.	P29317
Immunogen	Synthesized peptide derived from internal of Human EPHA2.
Raised In	Rabbit
Species Reactivity	Human
Specificity	The antibody detects endogenous levels of total EPHA2 protein.
Tested Applications	ELISA,WB;WB:1:500-1:3000
Form	Rabbit IgG in phosphate buffered saline (without Mg ²⁺ and Ca ²⁺), pH 7.4, 150mM NaCl, 0.02% sodium azide and 50% glycerol.
Purification Method	The antibody was affinity-purified from rabbit antiserum by affinity-chromatography using epitope-specific immunogen.
Clonality	Polyclonal
Alias	ECK; Ephrin type-A receptor 2 precursor; Epithelial cell kinase; kinase EphA2; MPK-5
Product Type	Polyclonal Antibody
Immunogen Species	Homo sapiens (Human)
Target Names	EPHA2

Image



Western blot analysis of extracts from COLO205 and Jurkat cells, using EPHA2 antibody.

Usage

For Research Use Only. Not for use in diagnostic or therapeutic procedures.