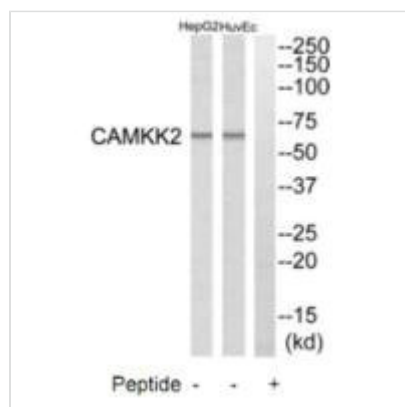




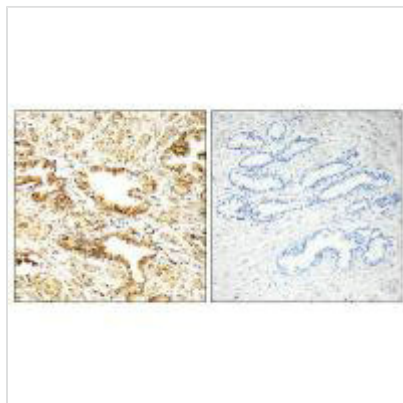
CAMKK2 Antibody

Product Code	CSB-PA582406
Storage	Upon receipt, store at -20°C or -80°C. Avoid repeated freeze.
Uniprot No.	Q96RR4
Immunogen	Synthesized peptide derived from internal of Human CAMKK2.
Raised In	Rabbit
Species Reactivity	Human
Specificity	The antibody detects endogenous levels of total CAMKK2 protein.
Tested Applications	ELISA,WB,IHC;WB:1:500-1:3000,IHC:1:50-1:100
Form	Rabbit IgG in phosphate buffered saline (without Mg ²⁺ and Ca ²⁺), pH 7.4, 150mM NaCl, 0.02% sodium azide and 50% glycerol.
Purification Method	The antibody was affinity-purified from rabbit antiserum by affinity-chromatography using epitope-specific immunogen.
Clonality	Polyclonal
Alias	Calcium/calmodulin-dependent protein kinase kinase 2; CaM-KK 2; CaM-kinase kinase 2; CaMKK 2; Calcium/calmodulin-dependent protein kinase kinase beta
Product Type	Polyclonal Antibody
Immunogen Species	Homo sapiens (Human)
Target Names	CAMKK2

Image



Western blot analysis of extracts from HuvEc cells and HepG2 cells, using CAMKK2 antibody.



Immunohistochemistry analysis of paraffin-embedded human prostate carcinoma tissue, using CAMKK2 antibody.

Usage

For Research Use Only. Not for use in diagnostic or therapeutic procedures.