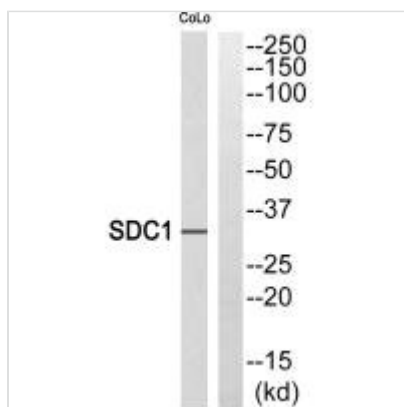




SDC1 Antibody

Product Code	CSB-PA046003
Storage	Upon receipt, store at -20°C or -80°C. Avoid repeated freeze.
Uniprot No.	P18827
Immunogen	Synthesized peptide derived from internal of Human SDC1.
Raised In	Rabbit
Species Reactivity	Human
Specificity	The antibody detects endogenous levels of total SDC1 protein.
Tested Applications	ELISA, WB; WB: 1:500-1:3000
Form	Rabbit IgG in phosphate buffered saline (without Mg ²⁺ and Ca ²⁺), pH 7.4, 150mM NaCl, 0.02% sodium azide and 50% glycerol.
Purification Method	The antibody was affinity-purified from rabbit antiserum by affinity-chromatography using epitope-specific immunogen.
Clonality	Polyclonal
Alias	Transmembrane protein 101; Putative NF-kappa-B-activating protein 130; TMEM101;
Product Type	Polyclonal Antibody
Immunogen Species	Homo sapiens (Human)
Target Names	SDC1

Image



Western blot analysis of extracts from HeLa cells, using SDC1 antibody.