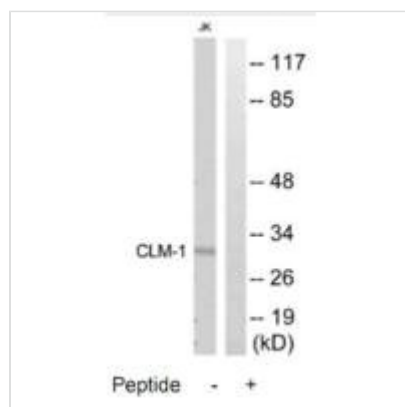




CD300LF Antibody

Product Code	CSB-PA988563
Storage	Upon receipt, store at -20°C or -80°C. Avoid repeated freeze.
Uniprot No.	Q8TDQ1
Immunogen	Synthesized peptide derived from internal of Human CLM-1.
Raised In	Rabbit
Species Reactivity	Human
Specificity	The antibody detects endogenous levels of total CLM-1 protein.
Tested Applications	ELISA, WB; WB: 1:500-1:3000
Form	Rabbit IgG in phosphate buffered saline (without Mg ²⁺ and Ca ²⁺), pH 7.4, 150mM NaCl, 0.02% sodium azide and 50% glycerol.
Purification Method	The antibody was affinity-purified from rabbit antiserum by affinity-chromatography using epitope-specific immunogen.
Clonality	Polyclonal
Alias	CMRF35-like molecule 1; CLM-1; CD300 antigen-like family member F; Immune receptor expressed on myeloid cells 1; IREM-1
Product Type	Polyclonal Antibody
Immunogen Species	Homo sapiens (Human)
Target Names	CD300LF

Image



Western blot analysis of extracts from Jurkat cells, using CLM-1 antibody.

Usage

For Research Use Only. Not for use in diagnostic or therapeutic procedures.